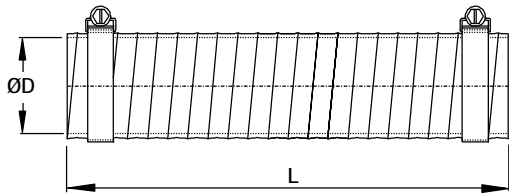




**FLEXIBLE CONNECTION**

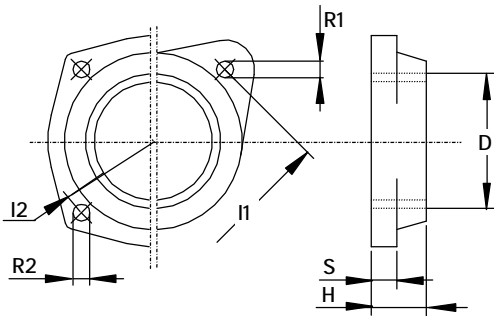
Steel reinforced rubber - coated fibreglass flex tubing, including 2 adjustable hose clamps. Working temperature: -55 ÷ +176 °C (-67 ÷ +350 °F). Maximum working pressure: 3 bar (44 psi).



TYPE	DN	D	L
MF 1	1/2"	20	200
MF 2	3/4"	26	200
MF 3	1"	32	200
MF 4	1" 1/4	45	200
MF 5	1" 1/2	50	250
MF 6	2"	64	250
MF 8	3"	89	330
MF 9	4"	114	330
MF 10	5"	140	330

**THREADED FLANGE**

Threaded flange in aluminum alloy.



TYPE	D	H	I1	I2	R1	R2	S
TF 4N	1" 1/4 npt	18	75	-	6.5	-	10
TF 4VN	1" 1/4 npt	18	64	-	6.5	-	10
TF 5N	1" 1/2 npt	18	85	-	6.5	-	10
TF 5VN	1" 1/2 npt	18	75	-	6.5	-	10
TF 6N	2" npt	18	85	-	6.5	-	10
TF 8N	3" npt	25	-	120	-	6.5	13
TF 9N	4" npt	25	-	150	-	9	13
TF 10N	5" npt	35	-	210	-	17	13

**SLEEVE**

Aluminum alloy or steel flanged sleeve coupling.

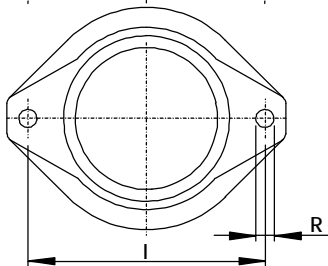
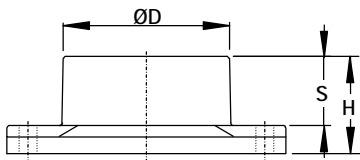


Fig. 1  
Mat.: Al

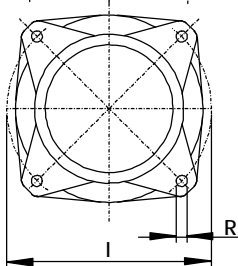
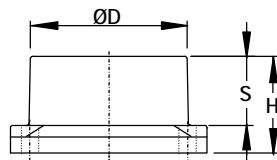


Fig. 2  
Mat.: Al

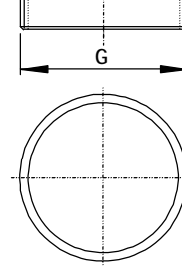
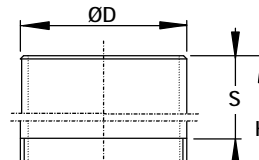


Fig. 3  
Mat.: Fe

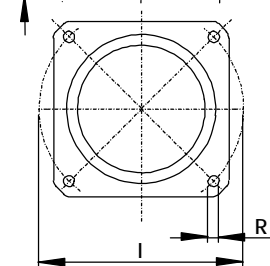
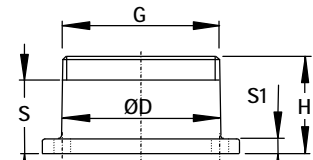


Fig. 4  
Mat.: Fe

TYPE	DN	D	G	H	I	R	S	Fig.
MP 3	1"	33	-	35	55	6.5	25	1
MP 4	1" 1/4	42	-	35	75	6.5	25	
MP 4V	1" 1/4	42	-	35	64	6.5	25	

TYPE	DN	D	G	H	I	R	S	S1	Fig.
MP 5V	1" 1/2	48	-	35	75	6.5	25	-	1
MP 6	2"	60	-	35	85	6.5	25	-	
MP 8	3"	88	-	45	120	6.5	32	-	2
MP 9	4"	114	4" npt	100	-	-	80	-	3
MP 10	5"	140	5" npt	60	210	18	40	8	4

Dimensions in mm. Tolerance on given values ± 10% - unbinding and can be changed without prior notice.