



**CA MANIFOLD FOR FA/FL/FS FILTERS**

90° wide radius PVC manifold with flanged connection and unthreaded or female threaded tube end. Working temperature -20° to +40°C (-5°/+105 °F).

Type	DN	A	B	D	S	I	M	R	Fig.
CA4-K	1.25"	10.24	6.30	1.65	0.59	2.52	0.28	3.15	1
CA4K-NPT	1.25" npt	11.61	6.30	1.65	0.59	2.52	0.28	3.15	1
CA5-K	1.5"	11.81	7.09	1.89	0.59	2.95	0.28	3.94	1
CA5K-NPT	1.5" npt	12.80	7.09	1.89	0.59	2.95	0.28	3.94	1
CA6V	2"	12.60	5.31	2.36	0.59	3.35	0.28	4.96	1
CA6V-NPT	2" npt	13.60	5.31	2.36	0.59	3.35	0.28	4.96	1
CA8	3"	14.96	7.28	3.48	0.59	4.72	0.28	7.09	1
CA8-NPT	3" npt	16.65	7.28	3.48	0.59	4.72	0.28	7.09	1
CA9	4"	15.75	9.25	4.48	0.79	5.91	0.35	8.66	2
CA9-NPT	4" npt	17.44	9.25	4.48	0.79	5.91	0.35	8.66	
CA10	5"	4.92	11.81	5.51	0.79	8.27	0.71	11.02	

Dimensions in inches - unbinding and can be changed without prior notice.

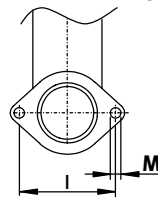
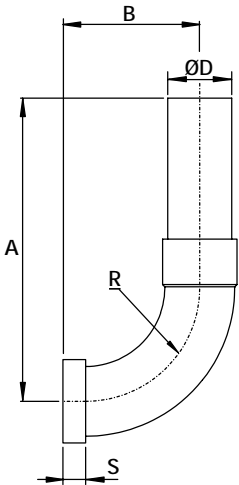


Fig. 1

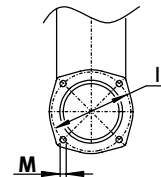


Fig. 2

**CK MANIFOLD**

90° aluminium manifold for "K" models supplied in a kit containing the gasket and bolts.

Fig. 1

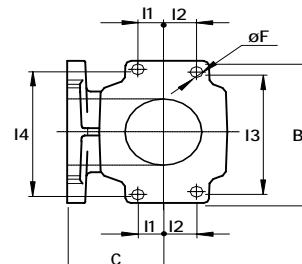
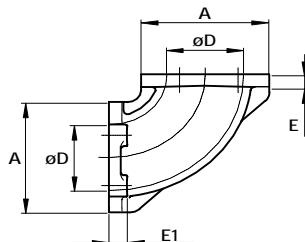
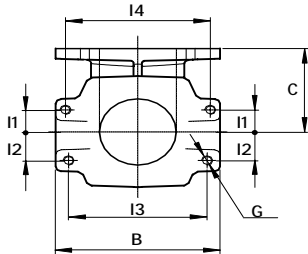
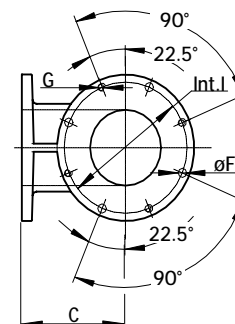
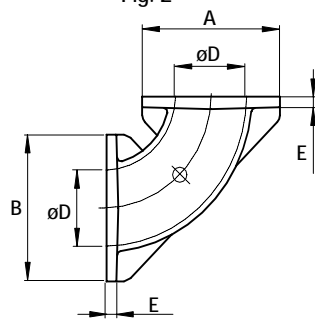
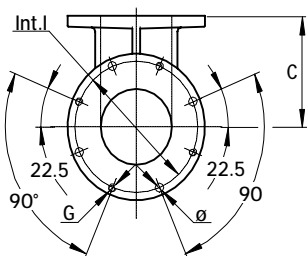


Fig. 2



Type	DN	A	B	C	D	E	E1	F	G	I	I1	I2	I3	I4	Fig.
CK5	1.5"	3.15	3.94	2.20	1.69	0.27	0.45	0.27	M6	-	0.69	0.69	3.35	3.35	1
CK6	2"	3.62	4.65	2.72	2.16	0.31	0.51	0.35	M8	-	0.73	0.95	3.92	4.10	
CK8	3"	5.71	5.71	4.31	2.95	0.39	-	0.35	M8	5.12	-	-	-	-	2
CK9	4"	6.50	6.50	5.22	3.54	0.39	-	0.35	M8	5.90	-	-	-	-	
CK10	5"	8.66	8.66	7.56	5.04	0.39	-	0.35	M8	7.48	-	-	-	-	

Dimensions in inches - unbinding and can be changed without prior notice.